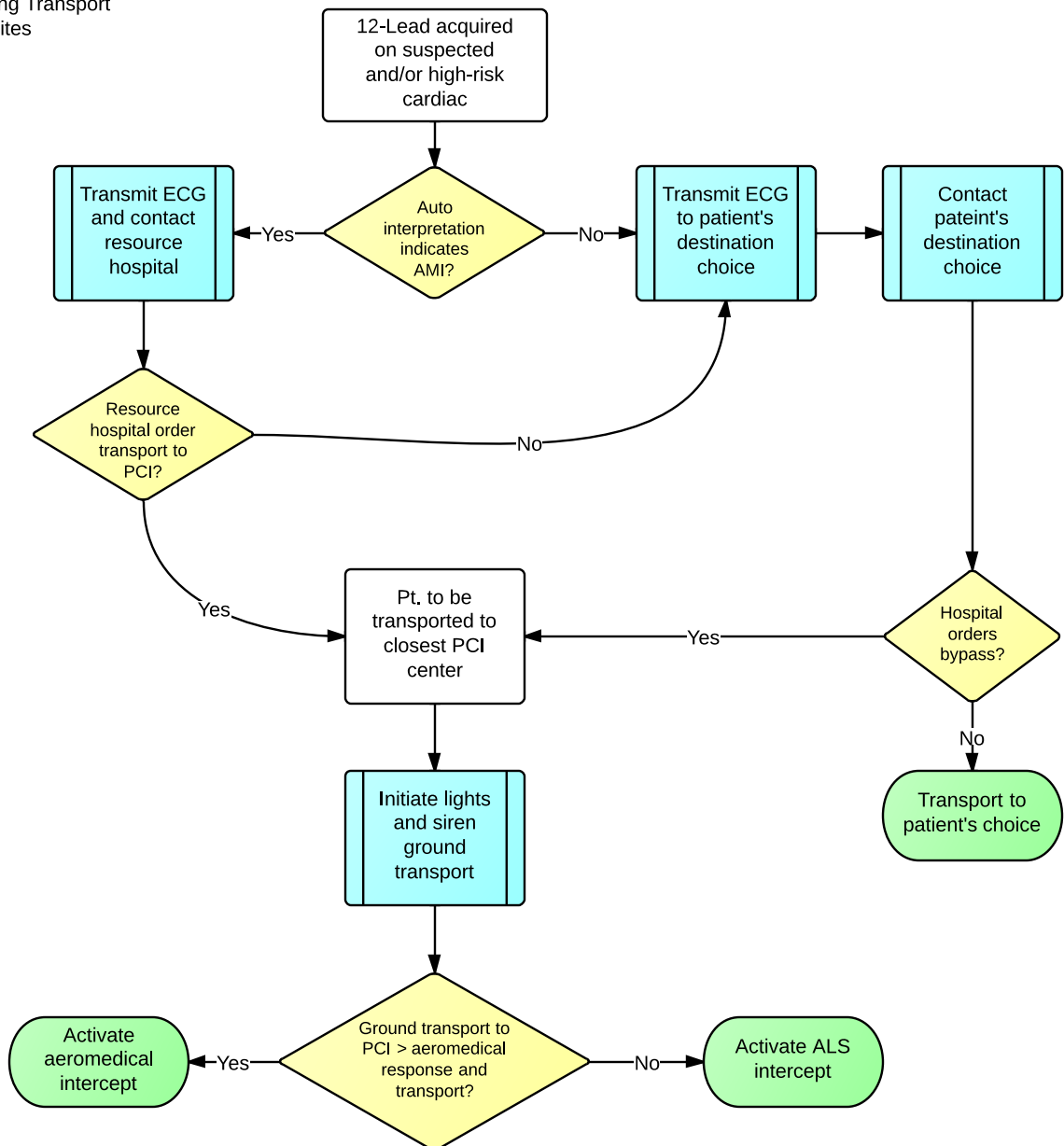


Decision Map for Suspected Cardiac STEMI Patients Requesting Transport to Non-PCI Facilities

BLS



Resource hospital is defined as Advocate Bromenn Medical Center and/or OSF St. Joseph Medical Center

Advocate Bromenn Medical Center and OSF St. Joseph Medical Center are considered being equal distance from all points within the McLean County Area EMS System for the purposes of this decision tree

If, after good faith efforts, a STEMI patient still refuses transport to a PCI center, a refusal form should be signed by the patient. Providers shall inform the patient at a minimum of the benefits of direct PCI transportation and the potential risks of transport to a non-PCI center. These efforts must be documented in the patient care report.

BLS AGENCIES ARE NOT TO INTERPRET 12-LEAD ECGs, REGARDLESS OF LEVEL OF INDIVIDUAL TRAINING